

LAUREL ART GUILD NEWSLETTER



April 2022

President's Message

Spring is

- sunshine and daffodils,
- Montpelier's Herb, Tea and the Arts Festival,
- the beginning of plein air season, and
- when we start lining up candidates to serve as next year's officers and chair people.

This year we are blessed with an abundance of new members. We're hoping some of you will step up to help keep LAG the welcoming, vibrant, and active group that it has been this past year. All of this year's programs and events have been made to happen by your current officers and chair people. Some of us have served for several years already and life is offering us new challenges, so that many of us are retiring at the end of this term. LAG needs officers to continue as a going concern, thus my appeal to you all.

New officers and chairs will have written manuals to guide them and the hands-on help of former officers and the LAG Board. You won't have to figure it out all on your own. Most of the work can be done at home, from your own computer and phone.

We have the following opportunities for you to become more active with LAG:

- **President** – leads LAG's Board, chairs LAG meetings, serves as contact point with Montpelier Art Center, helps Officers and Chairs with their duties as needed, writes monthly newsletter column. Requires 8 – 16 hours per month.
- **Treasurer** – tracks LAG income and expenditures, pays LAG bills, makes bank deposits and prepares monthly reports using Quicken (supplied). Requires about 8 hours per month.
- **Exhibits Chair** – contacts potential exhibit sites and coordinates exhibit details such as dates, entry forms, hanging and taking down exhibits. Requires about 4 – 5 hours per month.
- **Newsletter Editor** – requests input from members for each issue, uses newsletter template to arrange it into draft copy, sends to board members for review, makes updates and distributes final version. Requires 6-8 hours per month.

- **Program Chair** – solicits program ideas from members, contacts potential speakers, prepares brief description of program and speaker's background for the newsletter and coordinates event details with Montpelier Art Center (or Zoom). Requires 4 – 6 hours per month.
- **Workshop Chair** – solicits workshop ideas from members, contacts potential instructors, coordinates event details with Montpelier Art Center, coordinates other event details such as advertising the workshop, receiving entry forms and helping instructor with details during the workshop. Requires about 8 hours per workshop for 2-3 workshops.

If you can serve in any of these positions, please contact me at president@laurelartguild.org. and thank you for stepping up.

April Program

To be announced.

Laurel Art Guild Annual Open

April 2 to May 1, 2022

Melissa Gryder, the juror for the LAG 53rd Open has released the result. Out of 60 works of art she picked from 200 images, 14 are members of LAG. Also two members are on the alternate list. If any among the 60 does not confirm that he/she will hang the artwork, I will pick from the alternate list.

John Cholod has posted the results in the LAG website and have also activated PayPal so artists can pay online.

LAG Members whose artworks were accepted: John Cholod, Ofelia Moore, Sally Davies, Perveen Khan, Mary Ellen Simon, Eva Zang, Amy Brown, William Krawczwics, Angie O'Neal, Daniel Reyes and Anita Carrington, Carol Leo and Teresa Ficaretta.

Alternate: Carol Leo and Teresa Ficaretta

Drop Off: Tuesday, March 29 from 12 to 4. The following have volunteered to help:

12 to 4: Ofelia and Marsha Salzburg

12 to 2: Alice Murray, Teresa Ficaretta (Teresa will stay until 4 if need be)

2 to 4: Mark Schermerhorn. Keri Fuller

Reception: The reception will be held on Sunday, April 10, 2022, from 2 to 4 pm. at Montpelier Arts Center.

Best,

Ofelia

Other Exhibits

Watkins Nature Center, Upper Marlboro - mid-April to mid-June. Art work should have a wildlife/nature theme and be no larger than 18 x 24.

We are about to hang our second exhibit at Morningside House of Laurel. Exhibits will change every 2 months.

Laurel/Beltsville Senior Center, Laurel – July 18 – September 16.

Brookside Gardens, Wheaton - October 24 – December 5. Floral or nature scenes.

Annual Herbs, Teas, and Arts Festival Saturday April 30

This year, the Herbs, Teas, and Arts festival held annually on the grounds of Montpelier will resume operations after being closed for two years. Laurel Art Guild will be participating again and we are looking forward to being able to take part in this lively and productive arts festival. Our participation will take on three forms this year.

1. We will have community art outreach. This involves setting up four stations where visitors are able to walk up and try their hand at creating art using selected media provided by LAG.
2. The second part of our event involves the display and sale of art by individual members. For this segment, members will be asked to bring their own tables and setup equipment.
3. The third part of our involvement this year is a new venture, that of the sale of gently used or new art materials. Many LAG members have donated their superfluous supplies in the past to our monthly raffles for the scholarship fund. Since we have not been meeting in person, we have had no raffles, and some members have been asking for an outlet to donate or share such materials. This "white elephant" art supply sale will be an opportunity to offer your unwanted art supplies for sale and then support the LAG scholarship fund by donating a percentage of the proceeds to the scholarship fund.

All of these activities require support from LAG members. The event is open to the public from 10 am - 4 pm. LAG will set up from 8-9 am and take down from 4-5pm. In between are a number of hours when support will be needed for all the activities listed above. This event is our way of participating with our Montpelier Arts Center partners and thanking them for use of the facilities throughout the year.

Each time we have participated in this event, it has been fun and rewarding in many ways. Please let me know if you will be available to participate in any of the activities listed above as well as in setup or takedown. Thank you in advance! Carol Leo, LAG Activities Chair, 240-475-4219, paintoutdoors@laurelartguild.org

Member News

Lynda Cooper

LAG welcomes new member Lynda Cooper. Linda teaches art to Pre-K students with special needs and holds a Ph.D. in art history. Her interests include photography, drawing, painting and the cultural history of the Gilded Age. Lynda can be reached at cooper.lynda.m@gmail.com or at 301-802-4961.



Chili Peppers

Diane Shipley

Diane Shipley has a painting at Brookside Gardens in Wheaton as part of the Montgomery Artists Association's exhibit. There are 3 unframed pieces in the bin at the Gift Shop. March 14 – April 25.

Diane will also have 4 paintings at the Women's Club of Chevy Chase's annual art show being held April 1-3.

Teresa Ficaretta

Teresa Ficaretta had two pieces accepted into the juried exhibit, "City and Small Town Living" at Bowie City Hall. The show will be up until May 23, 2022. The pieces are titled "Cityscape I" and "Cityscape III" and both are 4"x6" collage.



Cityscape I



Cityscape III

Melodye Mitchell

The 13th Women in Art Exhibition is up in the Pascal Gallery, during Women's History Month. Several visual arts faculty invited artistically strong female students/artists to participate in this exhibit. Melodye Mitchell was invited to display a collection of landscape paintings and a collection of abstract paintings. Just by existing, this exhibition advocates for representation of women in the arts. You can review [information on advocacy and the need for it](#) at the National Museum of Women in Arts website.

Art of Women Invitational Exhibition

Pascal Gallery, AACC Arnold Campus*

Exhibition: March 5 – April 1

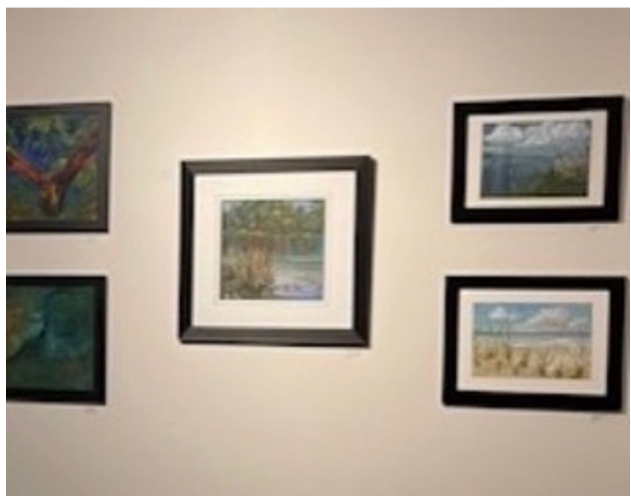
Gallery Hours:

8:30 AM – 8:00 PM Monday – Thursday

8:30 AM – 4:30 PM Friday

While there was no reception, we still are fortunate to hear from the artists! [Web pages to complement exhibition](#) include intro to exhibit, video of artist talks, general exhibit information.





Melodye is also a featured artist on Artskeeper.com. <https://artskeeper.com/>

Eva Zang

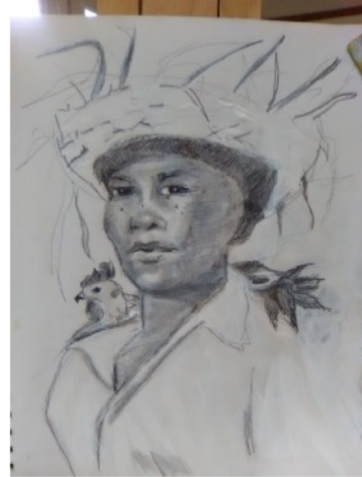
I have one painting "Bloom by Bloom" in the MAA Brookside Gardens Show from March 14-April 25. I also have two paintings at the April-June exhibit at the Morningside House of Laurel.

Leigh Marget

LAG is making art accessible. As a part of Black History Month, the Prince George's County Memorial Library System (PGCMLS) opened two art exhibits. The shows will be open throughout summer 2022. Patrons can see art any time they visit their local library. The two art exhibits are titled: "In Freedom's Name" and "Black and Proud." LAG'S own, Leigh Marget's portrait pieces titled: "Mama" and "Grandfather" are featured in the "Black & Proud" exhibit at the Oxon Hill Branch. For more information contact: tashi.mcgriff@pgcmls.info.



Grandfather



Mama

Angie O'Neal

ART in Motion (by Angie O'Neal, www.artistangelo.com)

When people think of the term "Art," images of great masterworks by Leonardo da Vinci, Monet, Rembrandt, or Georges Seurat come to mind. Canvases adorning the walls of the hushed hallowed halls of the Metropolitan Museum of Art in New York, Le Louvre in France, or the Berlinische Galerie in Germany may be on the bucket list of things to see and do.

BUT...Art is so much more than canvases, paints, and techniques. Art is designed to be experienced in a variety of forms. It is expression waiting to communicate and spark conversation. The effect of the art on the audience can elicit a variety of responses including but not limited to: applause; audible "oos and ahhs;" patronage or a sustained membership of the arts; advocacy for expanded arts programs for those in disadvantaged communities; crowd funding for arts scholarships, etc. The Arts can make you, laugh, cry, dance, sing, sculpt, paint, or heal a hurting heart. On a personal note, when I am working on a new project or finishing a piece, music is often in the backdrop as Alexa has learned to sense that I am in create mode. For me, the arts are in motion and that is not confined to my fingers moving brush strokes across a canvas. They are what I like to term: "The Five M's of Art in Motion"- Magical, Magnetic, Medicine, Memorable and Monumental.

Art is Magical...

Even if you do not understand the storyline well, a great piece of Art moves you to lean forward to experience the wonder of the scenery. If you have ever seen "Swan Lake," the Nutcracker," or watched skaters performing their routines in front of a worldwide audience, you may have been awed by the precision and skill of the moving artists. Every pirouette, pas de deux, leap, or triple axel caused you to press into the scene as a participant. Their moves were choreographed to music to convey life themes. Dance is art in motion that has often bridged the divide between time periods and cultures.

Art is Magnetic...

It is difficult to be at a concert or at a play and not be engaged with what is happening on stage and in the space around you. One of the challenges during the Pandemic was how to fully experience the arts if there are restrictions. There is a certain magnetic force that unites people to clap in unison or sway from side to side.

Art is Medicine...

Medical science and behavioral psychologists have written about the use of the arts in education and medicine for decades. The arts have been used as part of a multi-disciplinary approach to treat persons struggling with depression, cognitive disorders, or addictions; those in rehabilitation therapies after surgery; and, in long term care facilities to provide a creative "breath of fresh air" with limited mobility. Patients who were thought to be unreachable through traditional therapies often responded positively when paints, music, dance, or videos were introduced.

Art is Memorable and Monumental...

The arts provide a soundtrack and montage documenting the passage of time (the Roaring 20's, the great Depression, The Civil Rights Movement, Free Love 70's, etc). Sometimes the arts are like an anthem which chronicles the hope and lasting texture of relationships forged in the cauldron of change. Bette Midler's music in particular, "Wind beneath my wings," causes you to scan through the Kodak moments of your life. Art that is in motion through our emotions provides a language to express our deepest feelings in an audible manner. You cannot help but feel the emotions of the song in its lyrics and the voice style of the artist.

I hope that this article has expanded your thinking about what art is and sparked your desire to support the Arts. Your voice is a crucial tool for advocating and advancing the reach of the Arts in our communities. As you move about in your day humming a special tune, admiring the colorful landscape, or viewing a classical piece of artwork, remember that you are experiencing what that artist had in mind when he/she created it: a special canvas that moves you to live life more fully.

CURRENT EXECUTIVE BOARD:

President:

Mary Ellen Simon

president@laurelartguild.org

Vice President:

Ofelia Moore

lagopen@laurelartguild.org

Secretary:

Barbara Bennett

secretary@laurelartguild.org

Treasurer:

Eva Zang Tkatch

treasurer@laurelartguild.org

Membership:

Eva Zang Tkatch

membership@laurelartguild.org

Webmaster:

John Cholod

webmaster@laurelartguild.org

Exhibits:

Diane Shipley

exhibits@laurelartguild.org

Plein Air:

Carol Leo

paintoutdoors@laurelartguild.org

LAG Open:

Ofelia Moore

lagopen@laurelartguild.org

MAC Liaison:

Marleen Cunningham

tedmarl@msn.com

Laurel Arts Council Liaison:

Keri Anne Fuller

lucid@lucidartgallery.co

Newsletter Editor:

Pam Bozzi

newsletter@laurelartguild.org

Programs: OPEN

Workshops: OPEN

Historian: OPEN

Publicity: OPEN

Festival Activities: OPEN

PLEASE consider volunteering for an open position: we need your help!

**Laurel Art Guild Newsletter
Montpelier Arts Center
9652 Muirkirk Rd.
Laurel, MD 20708**

<https://www.laurelartguild.org>

**Newsletter Input Due the 15th of
the Month**

Addendum to April Newsletter

April Program

LAG programs are free and open to everyone. If we're meeting via Zoom, non-members can send an email to president@laurelartguild.org to request the Zoom link. Please do this **at least three days before the meeting** to allow time for a response to reach you.

GREAT NEWS! LAG's next program, on **April 11, 2022, at 7:00 pm**, will be held **IN PERSON** at the Montpelier Art Center, 9652 Muirkirk Road here in Laurel. Model **Lynda Cooper** will pose for us. She'll be lightly clothed because, since Montpelier is a public venue, we cannot guarantee her privacy. Please bring your own drawing, sketching and painting supplies.

Lynda is one of LAG's new members. She posed for us recently at one of our "fun" meetings held in Mark Schermerhorn's home studio. You may have noticed the figure drawings/paintings of her that some participants sent to a recent newsletter.

At this moment, LAG is in touch with Montpelier's staff to explore the possibility of having a hybrid in person – Zoom session. Watch your email for the latest information.